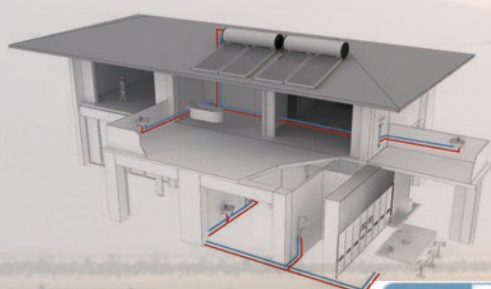


THERMOSIPHON SYSTEMS

ABAKOU® - ENAMELED



Volume	EtkH-150L	EtkH-200L	EtkH-250L	EtkH-300L
Capacity in litres	150L	200L	250L	300L
Tank diameters and lengths	φ560×1100	φ560×1470	φ600×1540	φ600×1780
Weight	50kg/255kg	60kg/322kg	69kg/384kg	78kg/462kg
Electric heater 230V mono	1.5kW with adjustable thermostat			
Operating pressure	8 bar max and 6 bar working pressure			
Outer coating	Alu zinc 150gr sprayed paint treated with tropical anti UV			
Inner tank	Enameled steel - thickness 1.8mm			
Insulation	Rigid polyurethane foam without CFC (thickness 50mm)			
Sizes (Width x length)	1100×2600mm	1470×2600mm	1540×2600mm	1780×2600mm
Structure terrace pre-painted	Z175	Z175	Z175	Z175
Aluminium structure T & U on roof	6063 T66	6063 T66	6063 T66	6063 T66
Titanium flat sensor	ETK2.0M	ETK2.7M	ETK3.0M	2xETK2.0M
Connection accessories	Cannes Stainless steel 316L insulated with connector, b3/4 cap, inter-sensor connector, T/P valve			



ISO 9001 and ISO 14001 CERTIFIED FACTORY

